

French Properties

ONLINE

Price on application

6 bedroom house
Surface : 240 m²
Surface of the land: 1000 m²
Year of construction: 1890
Exposition: east-west
View : panoramic
Kitchen: fitted kitchen
Heating: Heat pump
Inner condition: excellent
External condition: exceptional

Features:

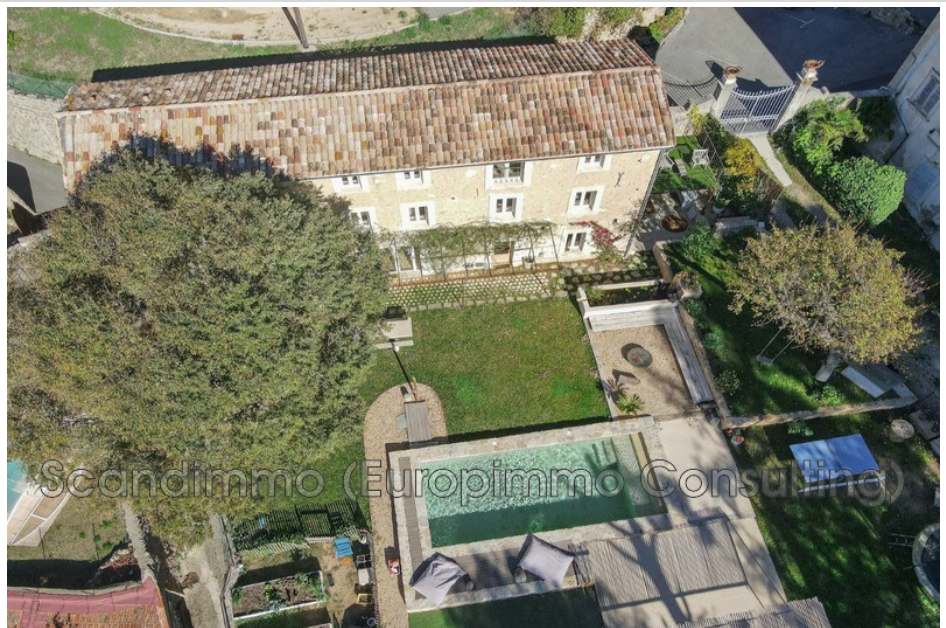
pool, air conditioning, shops at walking distance, double glazing, fireplace

6 bedroom
2 terraces
6 bathrooms
4 parkings

Energy class (dpe): Unavailable

Emission of greenhouse gases (ges):
Unavailable

Document non contractuel
13/02/2026 - Prix T.T.C



House Fayence

This magnificent property of approximately 240 sqm enjoys a rare and privileged location in the heart of Fayence's historic center, just a few steps from the main square, restaurants, and shops. A highly sought-after setting where everything is within walking distance. Formerly a silkworm farm, the property captivates with its authentic character and exceptional location. It has been tastefully and fully renovated in recent years, seamlessly blending period charm with modern comfort. The house offers breathtaking panoramic views and sits on a plot of approximately 1,000 sqm featuring a swimming pool. On the ground floor, you will find a welcoming living area comprising a lounge and open-plan kitchen, a laundry room, a separate guest toilet, and a versatile room that can serve as an office, workshop, playroom, or additional bedroom, depending on your needs. The first floor features a bedroom with en-suite bathroom and toilet, opening onto a terrace with stunning views, two additional bedrooms each with their own bathroom, a separate toilet, and a fourth bedroom with en-suite bathroom and toilet. On the top floor, an additional bedroom with en-suite bathroom and toilet completes the sleeping quarters. This level also offers a spacious 60 sqm room currently used as an office.

